

IPSWITCH™

Watch over your
network devices and
services with

WhatsUp Gold



 **WhatsUp** GOLD

Get the essentials of network management with WhatsUp Gold

For many organizations, computer networks are the single most valuable commodity of their business. Whether companies are selling products electronically via the Internet, providing applications and tools to their

WhatsUp Gold is widely recognized as a first-class product. It received a 2001 Network Computing Well-Connected Award in the category of small-to-medium business network management solutions. Additionally, WhatsUp Gold is integrated with Cisco Systems' CiscoWorks for

WhatsUp Gold is the ideal solution when you need immediate notification of network problems – without the overhead of a network management system.

employees, gathering information about their customers, or storing financial data, the network is their lifeblood. A network that is down can mean lost business, unhappy customers, lower employee productivity, and more.

WhatsUp Gold, Ipswitch's award-winning mapping, monitoring, notifying, and reporting software, presents a detailed view of a network to help you better understand and manage network resources.

WhatsUp Gold provides all the essential tools you need to stay on top of your network – 24 hours a day, seven days a week.

As an affordable alternative to expensive and complicated high-end network management systems, WhatsUp Gold is easily configured to match your network environment, scalable to accommodate growth, and simple to administer – even remotely.

Windows – forming an easy-to-use network management solution for small to medium-sized organizations.

WhatsUp Gold is the ideal solution when you need immediate notification of network problems – without all the overhead of complex network management systems.

THREE EASY STEPS TO WATCH OVER YOUR NETWORK

In a few simple steps, you will be able to discover and map your network, set up notifications to alert you the moment WhatsUp Gold detects a problem, and generate out-of-the-box reports to help you analyze your network uptime and response time.



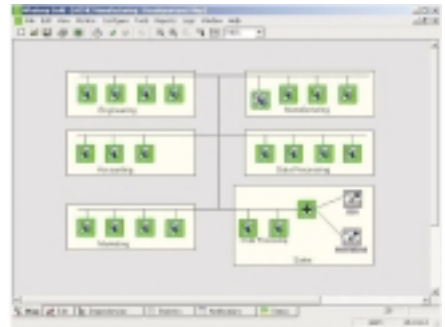


Step 1. Map your network

Using WhatsUp Gold's "SmartScan" discovery feature, you can generate diagrams of your network topology, including all devices and services on the network. You can drill down through the entire structure of your network, then edit your maps using custom icons, labels, drawings, or imported images to display the network view you want.

WhatsUp Gold's comprehensive mapping features provide an accurate and reliable picture of your network, including:

- ⇒ Graphical network maps with local alarms help you keep on top of network outages.
- ⇒ WhatsUp Gold's new scheduled active-discovery function eliminates routine administrative tasks so you will always know when new devices are added to your network.
- ⇒ User defined device types and icons mean you can now customize your maps by adding specialized devices.
- ⇒ For even greater flexibility, you can view your maps from wherever you are via a Web browser interface.



Step 2. Monitor your network

WhatsUp Gold monitors a wide range of devices, applications, and services for network problems. When a problem is detected on any designated device, WhatsUp Gold sends an alert via your chosen method – e-mail, pager, desktop alarm, desktop text-to-speech alarm, network message, or custom application.

You can extend your network monitoring capabilities even further by customizing WhatsUp Gold. Use the included threshold monitor plug-in to track real-time disk space or CPU utilization. Or, configure WhatsUp Gold to monitor end-user applications like Oracle, Notes, or Exchange. In addition, you can create customized program notifications to initiate automatic corrective actions such as rebooting a server or restarting an NT service.

WhatsUp Gold's comprehensive monitoring features include:

- ⇒ SNMP and TCP/UDP monitoring provides administrators network data without having to be prompted – saving time and creating more relevant network information.
- ⇒ Group notification feature helps you define response teams to be notified of problems, which is useful for international organizations that cover for each other 24/7.
- ⇒ Enhanced device identification takes the guesswork out of identifying problems by providing a more detailed picture of devices.

Step 3. Analyze your network

It's essential to analyze what is happening on your network in order to aid in network resource planning.

WhatsUp Gold's extensive reporting features keep track of device and application availability and response times to assist you in meeting service levels or measuring service providers.

- ⇒ Event reports let you track device and service downtime events

- ⇒ Performance graphs plot the accumulated polling statistics for selected subnets and/or application devices.
- ⇒ Statistics reports help analyze network problems and bottlenecks by showing average round-trip time and percentage of polls missed.

SYSTEM REQUIREMENTS

- ⇒ Intel Pentium or equivalent
- ⇒ Windows 98, 2000, ME, XP, NT 4.0 SP6 or later
- ⇒ Disk space: 30 MB minimum, 100 MB recommended
- ⇒ Memory: 64 MB minimum, 256 MB recommended





NOTIFICATION

WhatsUp Gold provides all the essential tools you need to stay on top of your network – 24 hours a day, seven days a week.



REPORTING

MONITORING



MAPPING

EXPERIENCE AND EXPERTISE FROM IPSWITCH

Since 1991, Ipswitch has produced easy-to-use products that make the workplace more productive by empowering people with the right tools. Ipswitch takes what is possible and makes it practical and affordable. Built by software professionals with a passion for the best tools for the job, the hallmark of Ipswitch's products is that they are easy to install, use, and maintain.

Other Ipswitch products include:

- ⇒ **IMail Server:** The 20-minute e-mail solution
- ⇒ **IMail Anti-Virus:** The best defense for e-mail viruses
- ⇒ **WS_FTP Pro:** The professional way to move files
- ⇒ **WS_FTP Server:** The secure file transfer solution
- ⇒ **WS_FTP Pro Developer's Kit:** The kit for building custom FTP applications
- ⇒ **WS_Ping ProPack:** The ultimate network information toolkit
- ⇒ **VT320 and TN Terminal Emulators:**
The most effective way to access host applications and data

Ipswitch, Inc.
81 Hartwell Avenue
Lexington, MA 02421 USA
Phone: +1.781.676.5700
Fax: +1.781.676.5710
E-mail: sales@ipswitch.com
Web: www.ipswitch.com

Ipswitch BV
Zekeringstraat 17
1014 BM Amsterdam
The Netherlands
Phone: 011 23 20 570 8912
Fax: 011 31 20 570 8984
E-mail: internationalsales@ipswitch.com

Protect your investment with a service agreement

A comprehensive service agreement for WhatsUp Gold is available at an additional cost. With the service agreement, users receive unlimited support from Ipswitch's technical support organization, access to a searchable database of frequently asked questions, list server membership, software upgrades, and more. Ipswitch's technical support is second to none in providing assistance to both new and experienced users. Please visit our Web site for pricing information.

Try WhatsUp Gold free for 30 days

We are so sure that WhatsUp Gold is the perfect solution for monitoring your network, we are offering you the opportunity to try WhatsUp Gold free and with no obligation for 30 days. Just visit Ipswitch's Web site at www.ipswitch.com to download your free evaluation copy today.

To purchase WhatsUp Gold:

Please contact a reseller or distributor near you. Details can be found at www.ipswitch.com/purchase.

Or, buy WhatsUp Gold directly at 1-800-793-4825 or electronically from the Ipswitch e-commerce server at www.ipswitch.com/purchase.

Copyright © 2002 Ipswitch, Inc. WhatsUp and WS_FTP are registered with the U.S. Patent and Trademark Office. Ipswitch, the Ipswitch logo, IMail, and WS_Ping ProPack are trademarks of Ipswitch, Inc. Other products or company names are or may be trademarks or registered trademarks and are the property of their respective holders.

